

XSmartCOM

Be smart – let your dreams fly

Plugin for easy input numeric values in X-Plane

COM RADIO

NAV RADIO

ADF RADIO

TRANSPONDER AUTOPILOT

ALTITUDE AUTOPILOT SPEED

AUTOPILOT VERTICAL SPEED

AUTOPILOT HEADING

AUTOPILOT COURSE

ALTIMETER BARO

And ANY ADDITIONAL DATAREF's

777 R&P Support now!

X-Plane 9 and X-Plane 10

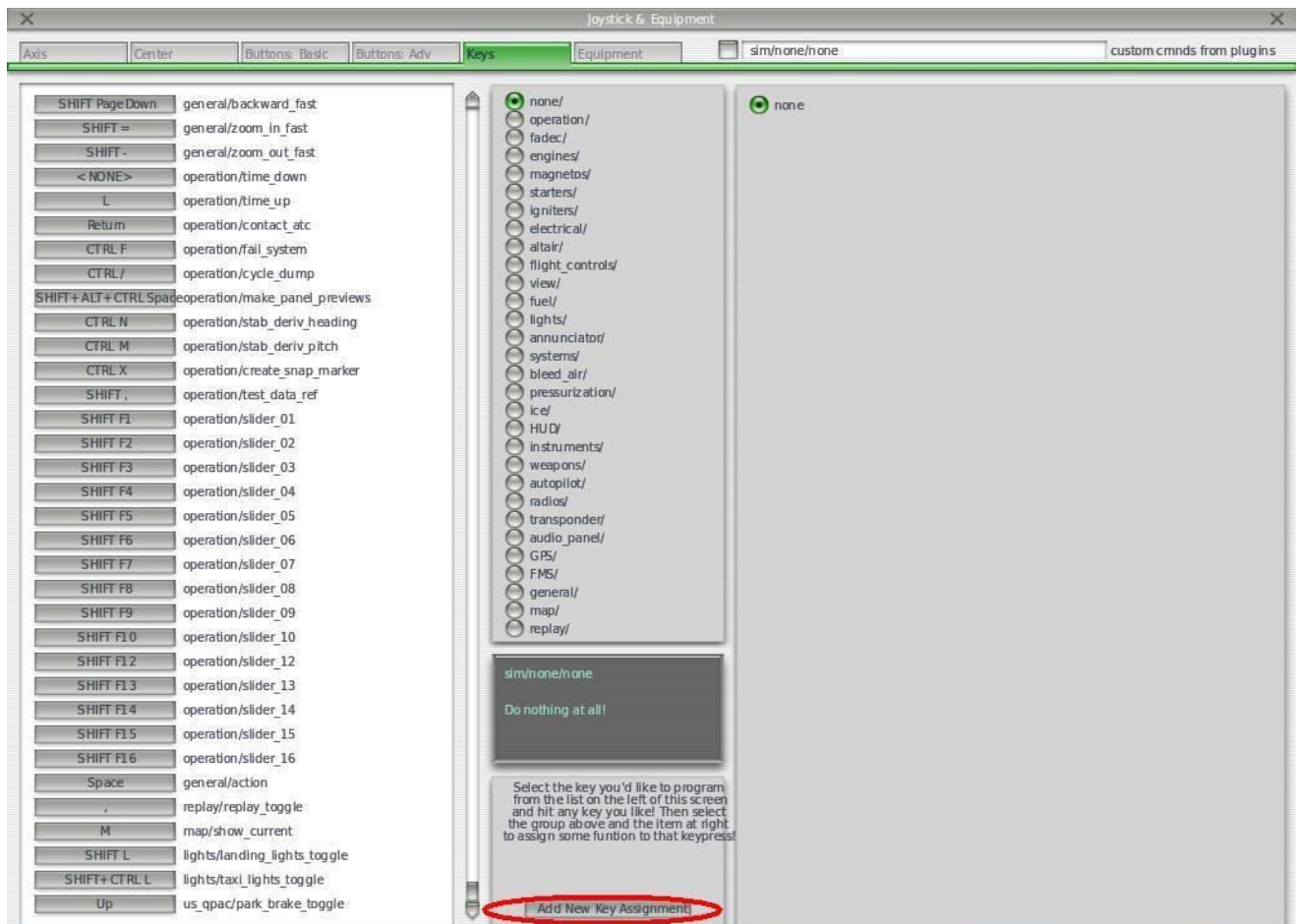
Mac, Windows and Linux

Installation

1. Like any other X-Plane plugins just unzip plugin to *<X-Plane root directory>/Resources/plugins.*

XSmartCOM Setup

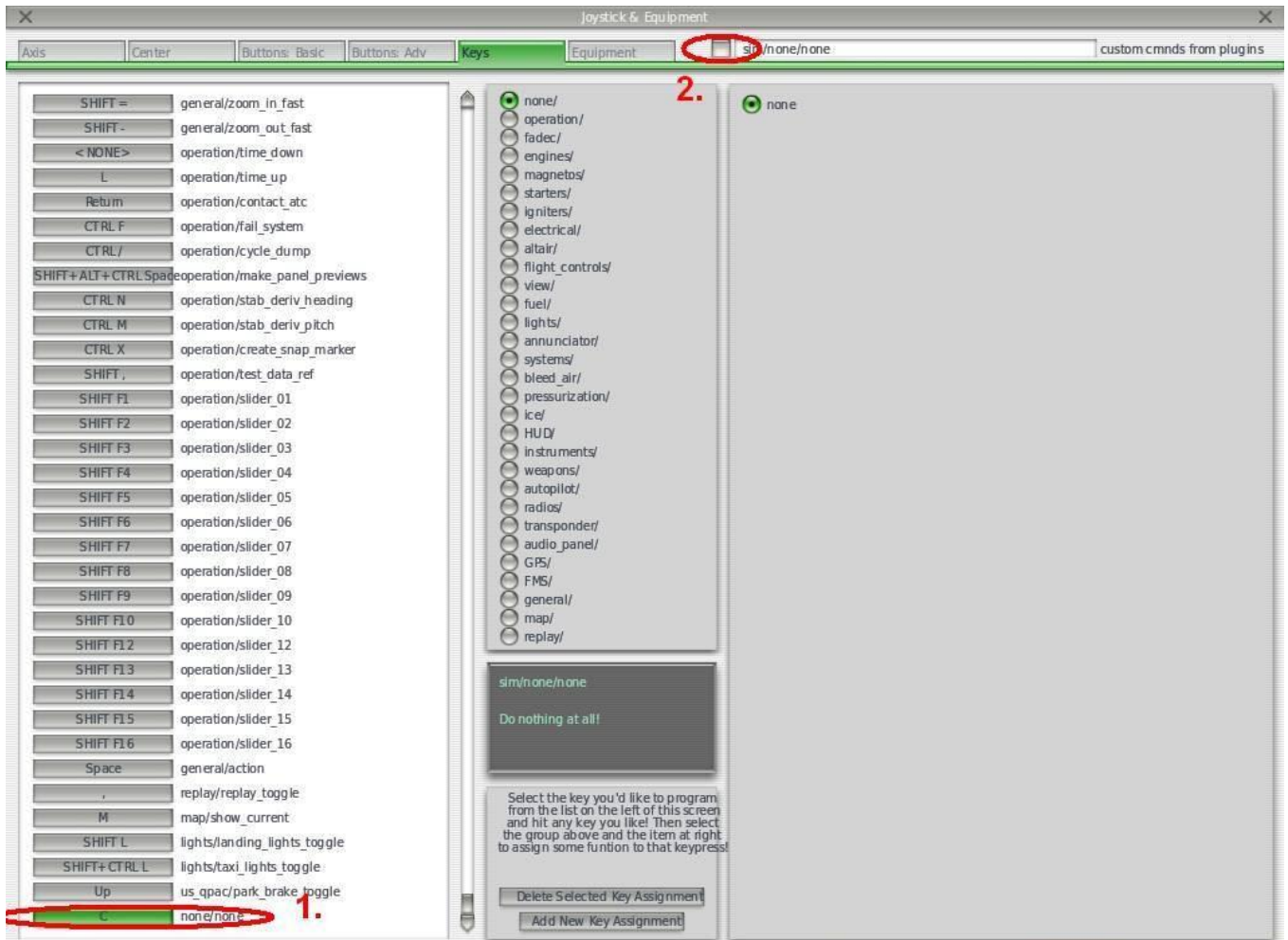
1. Go to *Settings – Joystick & Equipment* and press *Add New Key Assignment.*



XSmartCOM – Plugin for easy input numeric values in X-Plane.

Ver. 2.3 Final

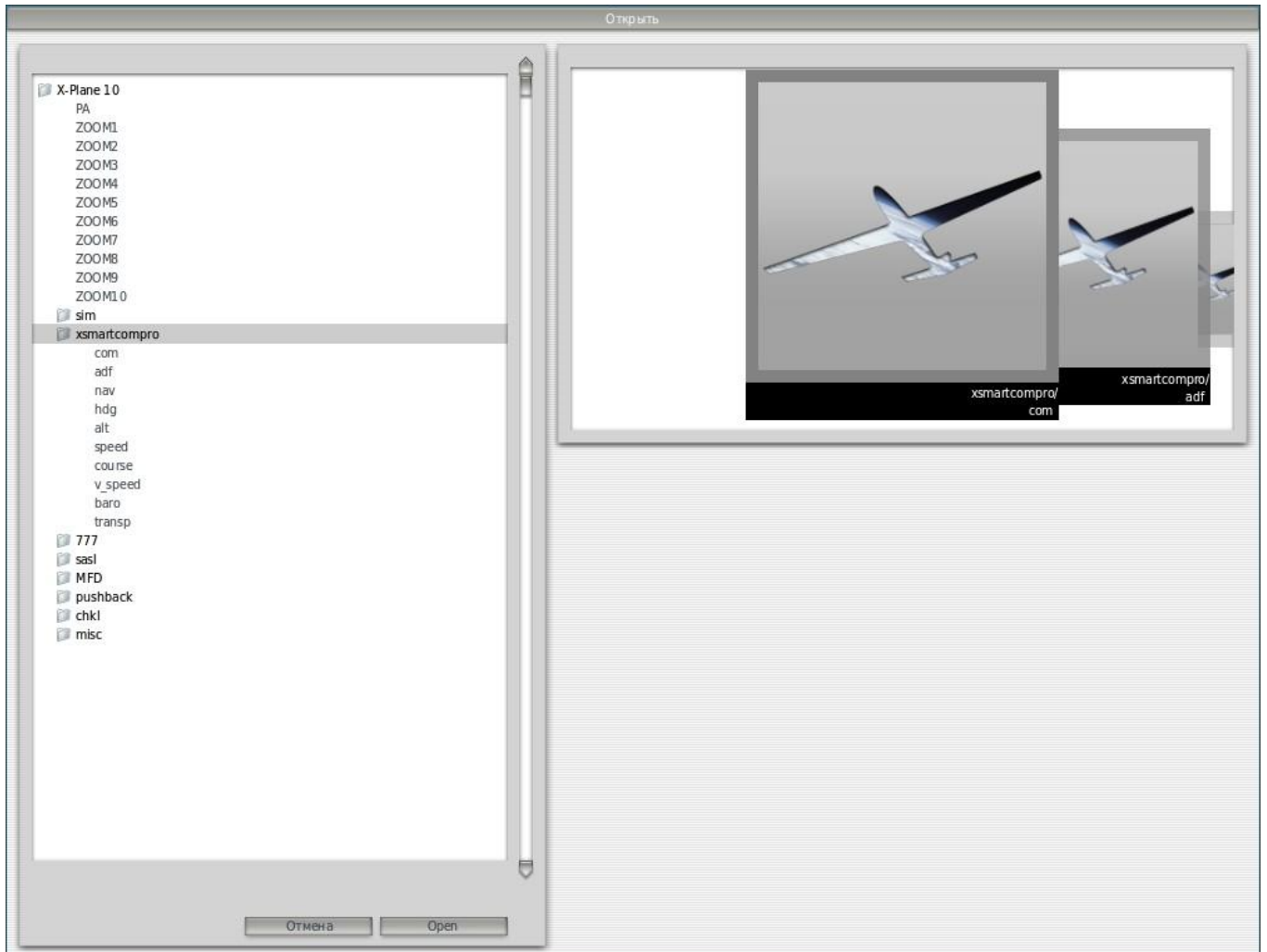
2. Set hot key (1) and choose from *custom cmnds from plugin* XSmartCOM command (2).



XSmartCOM – Plugin for easy input numeric values in X-Plane.

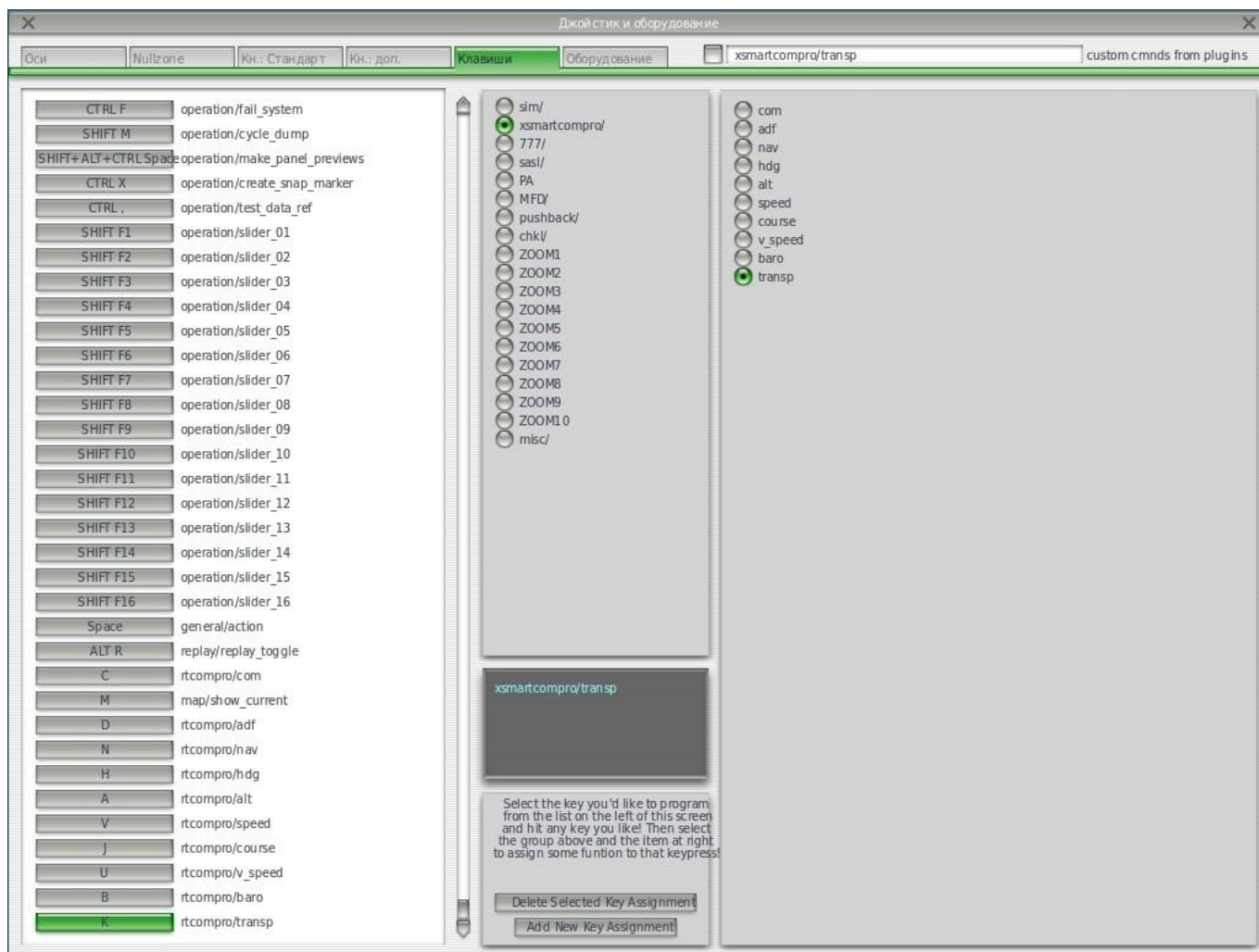
Ver. 2.3 Final

Bellow I show how to find XSmartCOM commands. This is the same like for all another custom commands distributed from plugins/aircraft's.



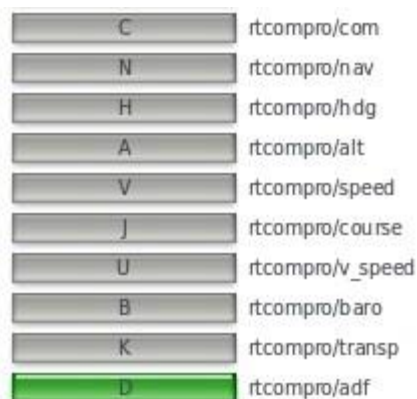
XSmartCOM – Plugin for easy input numeric values in X-Plane.

Ver. 2.3 Final



By default there are the next commands available:

- **COM**
- **NAV**
- **ADF**
- **ALTITUDE**
- **SPEED**
- **HEADING**
- **TRANSPONDER**
- **VERTICAL SPEED**
- **BARO**
- **COURSE**



In *Plugins – XSmartCOM – Settings* window you can select *Use Text to Speech engine* and *Use Numpad keyboard* instead of using normal number keys for input values. You can select *Don't hide* if you want information window to be always on top. (Otherwise it will disappear if no input was made). You can move XSmartCOM information window as well.

XSmartCOM Usage

XSmartCOM plugin is very simple. Just press one of the hot keys above and input the value with keyboard. Be quick enough and you will see the input value on the information window. *Note: check that the number buttons are not used for another X-Plane functions (hot keys).*



To enter COM2, NAV2, ADF2, COURSE2 or BARO copilot (or input **negative vertical speed**) just make a **double press** of the hot key.

The XSmartCOM plugin is really smart – be sure your input values are in allowed range. If not – the value will not be send to X-Plane.

Currently the ranges for default commands are:

- COM – 5 digits from 118.00 to 136.00 MHz
- NAV – 5 digits from 108.00 to 117.95 MHz
- ADF – 4 digits from 190 kHz to 1750 kHz
- ALTITUDE – 3 digits from 000 to 450 x 10² ft
- SPEED – 3 digits from 000 to 999 kts
- VERTICAL SPEED – 4 digits from -9999 to 9999 ft/min
- TRANSPONDER – 4 digits from 0000 to 7777
- HEADING – 3 digits from 000 to 359
- BARO – 4 digits from 25.24 to 32.13 inches of mercury or from 854 to 1088 mbar

Examples

COM Hot Key – 1 – 2 – 4 – 1 – 2 - you will get COM1 124.12 MHz value.

NAV Hot Key – NAV Hot Key – 1 – 0 – 9 – 4 – 5 - you will get NAV2 109.45 MHz value.

ADF Hot Key – 0 – 4 – 9 – 4 - you will get ADF1 494 kHz value.

ALTITUDE Hot Key – 2 – 7 – 0 - you will get FLV 270 (27000 ft) value.

ALTITUDE Hot Key – 0 – 1 – 6 - you will get ALTITUDE 1600 ft value.

Configuration

From version 2.0 it is possible to adjust the default commands and configure the plugin to use with custom dataref's (from custom aircraft's). There are 2 configuration files to do that:

- 1st file *default.cfg* you can find in the plugin folder. This file contains default commands and will be used for all aircraft's in X-Plane if no specific settings (see next) were made.

- 2nd file *xsmartcom.cfg* in the aircraft folder. This file you need to create by yourself. (Note: commands from this file will be loaded with 5 sec delay!)

Both files are INI files with following keys are used:

```
[0] // number of command in file - section name
STRINGTOSPEAK_1 // string for speaking and showing on the window in case of
single press
STRINGTOSPEAK_2 // same in case of double press
DATAREFSTRING_1 // dataref for command in case of single press
DATAREFSTRING_2 // same in case of double press
COMMANDINFO // Can be used for showing some text in X-Plane commands assignment
menu
COMMANDPOSTFIX // Command name in X-Plane commands assignment menu
ISTWICE // =1 if double press will be used; =0 for single command
ISFLOAT // =1 if dataref uses float type
SIGN // =-1 if double press will be used for minus value (see vertical speed); =1
for normal commands;
NUMBEROFDIGITS // number of digits for capturing
VALUEMIN // min value for sending to X-Plane VALUEMAX
// max value for sending to X-Plane VALUEMINOPT //
optional min value for sending to X-Plane VALUEMAXOPT //
optional value for sending to X-Plane
OPTFACTOR // if input value is in optional range (VALUEMINOPT < input <
VALUEMAXOPT) then INPUT VALUE * OPTFACTOR will be send to X-Plane (see baro command)
MULTIPLIER // factor to adjust the input value before sending to X-Plane
(INPUT VALUE * MULTIPLIER will send)
CAPTUREMULTIPLIER // currently not used
```

On the next pages you can see full *default.cfg*. You can use this file to create custom *xsmartcom.cfg* files for custom aircraft's.

default.cfg

```
[0]
STRINGTOSPEAK_1=NAV 1
STRINGTOSPEAK_2=NAV 2
DATAREFSTRING_1=sim/cockpit/radios/nav1_freq_hz
DATAREFSTRING_2=sim/cockpit/radios/nav2_freq_hz
COMMANDINFO=
COMMANDPOSTFIX=nav
ISTWICE=1
ISFLOAT=0
SIGN=1
NUMBEROFDIGITS=5
VALUEMIN=10800
VALUEMAX=11795
VALUEMINOPT=0
VALUEMAXOPT=0
OPTFACTOR=0
MULTIPLIER=1.0
CAPTUREMULTIPLIER=0.01
```

```
[1]
STRINGTOSPEAK_1=COM 1
STRINGTOSPEAK_2=COM 2
DATAREFSTRING_1=sim/cockpit/radios/com1_freq_hz
DATAREFSTRING_2=sim/cockpit/radios/com2_freq_hz
COMMANDPOSTFIX=com
COMMANDINFO=
ISTWICE=1
ISFLOAT=0
SIGN=1
NUMBEROFDIGITS=5
VALUEMIN=11800
VALUEMAX=13600
VALUEMINOPT=0
VALUEMAXOPT=0
OPTFACTOR=0
MULTIPLIER=1.0
CAPTUREMULTIPLIER=0.01
```

```
[2]
STRINGTOSPEAK_1=ADF 1
STRINGTOSPEAK_2=ADF 2
DATAREFSTRING_1=sim/cockpit/radios/adf1_freq_hz
DATAREFSTRING_2=sim/cockpit/radios/adf2_freq_hz
COMMANDPOSTFIX=adf
COMMANDINFO=
ISTWICE=1
ISFLOAT=0
SIGN=1
NUMBEROFDIGITS=4
VALUEMIN=190
VALUEMAX=1750
VALUEMINOPT=0
VALUEMAXOPT=0
OPTFACTOR=0
MULTIPLIER=1.0
CAPTUREMULTIPLIER=0.1
```


XSmartCOM – Plugin for easy input numeric values in X-Plane.

Ver. 2.3 Final

```
[3]
STRINGTOSPEAK_1=ALTITUDE
STRINGTOSPEAK_2=
DATAREFSTRING_1=sim/cockpit/autopilot/altitude
DATAREFSTRING_2=
COMMANDPOSTFIX=alt
COMMANDINFO=
ISTWICE=0
ISFLOAT=1
SIGN=1
NUMBEROFDIGITS=3
VALUEMIN=0
VALUEMAX=450
VALUEMINOPT=0
VALUEMAXOPT=0
OPTFACTOR=0
MULTIPLIER=100.0
CAPTUREMULTIPLIER=1.0
```

```
[4]
STRINGTOSPEAK_1=SPEED
STRINGTOSPEAK_2=
DATAREFSTRING_1=sim/cockpit/autopilot/airspeed
DATAREFSTRING_2=
COMMANDPOSTFIX=speed
COMMANDINFO=
ISTWICE=0
ISFLOAT=1
SIGN=1
NUMBEROFDIGITS=3
VALUEMIN=0
VALUEMAX=999
VALUEMINOPT=0
VALUEMAXOPT=0
OPTFACTOR=0
MULTIPLIER=1.0
CAPTUREMULTIPLIER=1.0
```

```
[5]
STRINGTOSPEAK_1=HEADING
STRINGTOSPEAK_2=
DATAREFSTRING_1=sim/cockpit/autopilot/heading_mag
DATAREFSTRING_2=
COMMANDPOSTFIX=hdg
COMMANDINFO=
ISTWICE=0
ISFLOAT=1
SIGN=1
NUMBEROFDIGITS=3
VALUEMIN=0
VALUEMAX=359
VALUEMINOPT=0
VALUEMAXOPT=0
OPTFACTOR=0
MULTIPLIER=1.0
CAPTUREMULTIPLIER=1.0
```

XSmartCOM – Plugin for easy input numeric values in X-Plane.

Ver. 2.3 Final

[6]

```
STRINGTOSPEAK_1=COURSE
STRINGTOSPEAK_2=COURSE 2
DATAREFSTRING_1=sim/cockpit2/radios/actuators/nav1_obs_deg_mag_pilot
DATAREFSTRING_2=sim/cockpit2/radios/actuators/nav1_obs_deg_mag_copilot
COMMANDPOSTFIX=course
COMMANDINFO=
ISTWICE=1
ISFLOAT=1
SIGN=1
NUMBEROFDIGITS=3
VALUEMIN=0
VALUEMAX=359
VALUEMINOPT=0
VALUEMAXOPT=0
OPTFACTOR=0
MULTIPLIER=1.0
CAPTUREMULTIPLIER=1.0
```

[7]

```
STRINGTOSPEAK_1=TRANSPONDER
STRINGTOSPEAK_2=
DATAREFSTRING_1=sim/cockpit/radios/transponder_code
DATAREFSTRING_2=
COMMANDPOSTFIX=transp
COMMANDINFO=
ISTWICE=0
ISFLOAT=0
SIGN=1
NUMBEROFDIGITS=4
VALUEMIN=0
VALUEMAX=7777
VALUEMINOPT=0
VALUEMAXOPT=0
OPTFACTOR=0
MULTIPLIER=1.0
CAPTUREMULTIPLIER=1.0
```

[8]

```
STRINGTOSPEAK_1=VERTICAL PLUS
STRINGTOSPEAK_2=VERTICAL MINUS
DATAREFSTRING_1=sim/cockpit/autopilot/vertical_velocity
DATAREFSTRING_2=sim/cockpit/autopilot/vertical_velocity
COMMANDPOSTFIX=v_speed
COMMANDINFO=Set vertical speed value
ISTWICE=1
ISFLOAT=1
SIGN=-1.0
NUMBEROFDIGITS=4
VALUEMIN=-9999
VALUEMAX=9999
VALUEMINOPT=0
VALUEMAXOPT=0
OPTFACTOR=0
MULTIPLIER=1.0
CAPTUREMULTIPLIER=1.0
```

```
[9]
STRINGTOSPEAK_1=BAROMETER
STRINGTOSPEAK_2=BAROMETER 2
DATAREFSTRING_1=sim/cockpit/misc/barometer_setting
DATAREFSTRING_2=sim/cockpit/misc/barometer_setting2
COMMANDPOSTFIX=baro
COMMANDINFO=
ISTWICE=1
ISFLOAT=1
SIGN=1
NUMBEROFDIGITS=4
VALUEMIN=2524
VALUEMAX=3213
VALUEMINOPT=854
VALUEMAXOPT=1088
OPTFACTOR=2.953
MULTIPLIER=0.01
CAPTUREMULTIPLIER=1.0
```